

iSmartView

(For iPhone)

User manual

(For B/L/H/M series)

2013-04 REV1.0

1. iSmartView summary

iSmartView (for iPhone) is an application software based on IOS OS, suitable for iPhone mobile phone or iPad tablet PC, support IOS 4.3 and above; The iSmartView has the following functions:

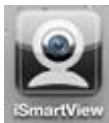
- ◆ Support B/L/H/M series IP camera;
- ◆ Support for view video, monitor sound, talk, PTZ control and snapshot etc;
- ◆ Support for search and add the device in LAN;
- ◆ Support for visit the device by DDNS;
- ◆ Support for edit and manage the device.

2. Obtain the software

- ◆ Search and download the “iSmartView” from App Store.

3. Installation

Download “iSmartView” to mobile phone and install it. Finish installation, it will display the icon as below:



Tips: Please ensure to finished network setting as IP camera’s user manual and can visit it by LAN or WAN before using the iSmartView.

4. Operation

1. Click the icon at figure 1 to launch the “iSmartView”, and then display welcome picture as figure 2;
2. Add device (prompt “Are you sure to add camera?” when first use), as figure 3;



Figure 1



Figure 2



Figure 3

There are two way for adding device, that is add manually and search to add automatically.

☆ **Add device manually as the following step, example of figure 4:**

- a) Type: select correct product series you want to add;
- b) Host: input DDNS or LAN ip address;
- c) Port: input http port of the camera;
- d) User: input username of the camera;
- e) Psw: input username of the camera;
- f) Name: input camera name.

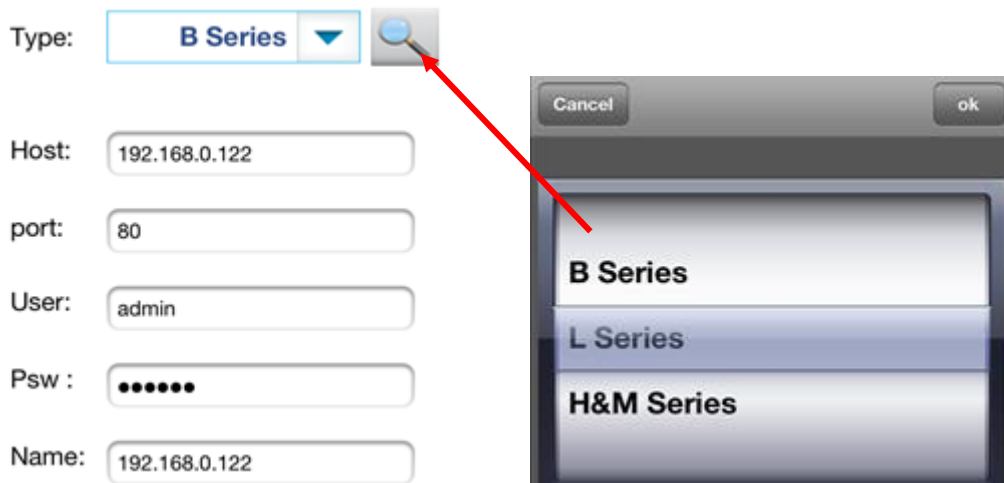


Figure 4

☆ **Search to add device automatically as below, example of figure 5:**


- a) Click  button, it will pop up device list searched when searching camera in LAN;
- b) Select the camera you want to add, will display it as figure 5, click “save” button, finish to add camera successfully, as figure 6.



Figure 5



Figure 6

3. Play control

Tick the camera you want to play, click “play” button to enter play interface as figure 7, you can perform the function for PTZ control, stop playing, snapshot, monitor, talk.

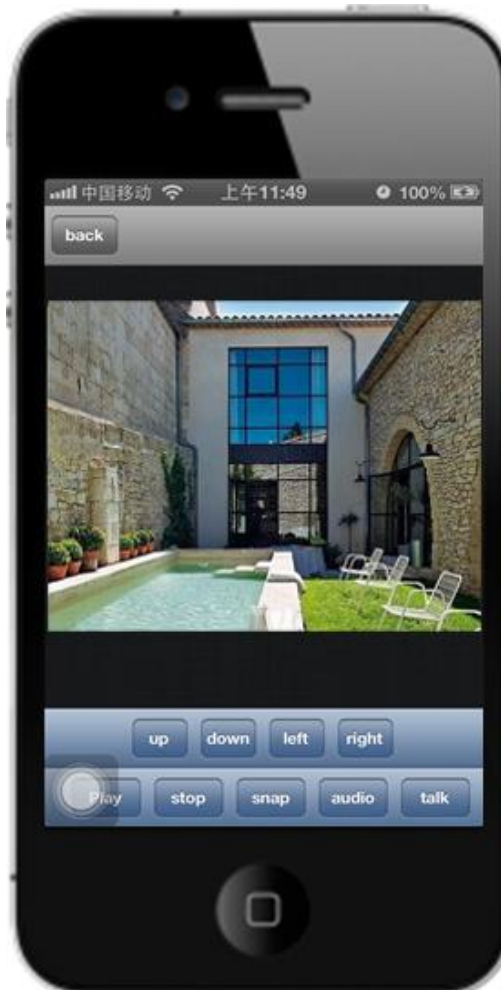


Figure 7